

PretonPower™

SOFTWARE-BASED COMPUTER POWER SAVER

60% REDUCTION IN PC ELECTRIC BILL

For no good reason, most computers are left powered-on during non-working hours, resulting in a significant waste of energy. Because of the rapid rise in energy prices and increasing environmental legislation, organizations like yours are seeking new and innovative solutions for more efficient power consumption.

“Deploying PretonPower - required very little effort on our part. Since we began using it six months ago, we've already saved thousands of Kwh per month.”

*Yariv Eytan, CIO
LGEC*

PretonPower™ solves the problem by shutting down computers when they are not in use – at night, during weekends and even during the day, without interrupting your employees' working habits.

CURRENT YEAR ROI INCREASE

PretonPower's advanced computer power management software solution enables you to manage and control energy consumption to reduce both your overall electricity costs and the CO₂ emissions across your organization's LANs and WANs.

Your return on investment will be clear, as you dramatically reduce power expenditure...but for your employees, it's business as usual.

FLEXIBLE ENERGY SAVING POLICIES

The centralized PretonPower energy management console enables you to establish and manage power policies across the organization. PretonPower's individual and group behavioral models seamlessly integrate into the system without interrupting work or ICT performance. With PretonPower you can remotely control PCs and choose between Hibernate, Sleep and Shut Down modes.

CONVENIENT WAKE-UP FUNCTION

PretonPower offers several advanced wake-up capabilities for computers in a low-power state, including on-demand or scheduled options when the computer stays powered off or in sleep/hibernate mode until a specified wake-up policy is activated. PretonPower also supports on-demand functionality for a specific computer and a convenient remote "Wake-on-Web" option.

PRETONPOWER+ PRETONSAVER = BEST SAVINGS

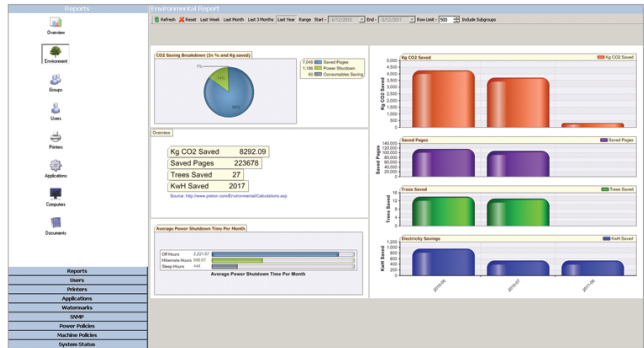
PretonPower and our ink and toner-saving software, PretonSaver™, are fully integrated for optimum results. With a single administration interface, you can define usage policies for both computers and printers. Using Preton's combined software applications can save you up to \$110 per employee, per year.

DID YOU KNOW?

- Computers use 60% of their maximum power while in idle mode, and typically run at just 15% utilization.
- When a PC is idle, 60% of the system's power consumption is used by the monitor, while the other 40% is used to keep the hard drive spinning and to power the electronics.
- More than 90% of the time, PCs are powered on, usually well beyond actual client user demand over the course of a day or a week.
- PretonPower not only saves power during evenings and weekends, but also reduces your carbon footprint.

FEATURES

- Open and flexible power management policies:
 - Multiple same-day power policies
 - Option for users to personally control individual policies
 - Granularity down to single machine level
 - Automatic sync with Microsoft Active Directory for groups of machines or an individual machine
- Open file and unsaved data prompt display
 - Ensure work is saved before powering off the computer
- Wide-range of wake-up options
 - Automatic and scheduled
 - On-demand
 - “Wake on LAN”
 - “Wake on Web” - individual, web-based access for users who need to start their computer from a remote location
- Supports Intel® AMT
- Enterprise-ready
 - Supports tens of thousands of computers from a single console
- Detailed and easy-to-read reports
- Customized solution
 - Enterprise-view dashboards
 - Personalized electricity tariffs
 - Flexible energy-saving policy modules
- Simple setup and configuration
- Comprehensive system training



SUSTAINABLE POWER SAVING CHART

BENEFITS

- Save more than 60% on your computers' electricity bill
- Centralized, 24/7, PC ecosystem power management
- CO₂ emission reduction
- Value-added saving option
 - Fully-integrated with PretonSaver, Preton's toner and ink saver software solution

SAVE THE ENVIRONMENT

Carbon Dioxide (CO₂) is known for producing greenhouse gases that cause global warming. Leaving your computer powered on all the time adds approx. 10kg of CO₂ to your organization's carbon footprint – equivalent to driving almost 40 miles in a medium-sized car.

Your PC consumes 535 to 550 kWh of electricity per year, of which 2/3 is wasted while your computer is unused, but in active mode.

With PretonPower, enforce power management policies and reduce energy costs to reduce your carbon footprint and help save the environment.

SYSTEM REQUIREMENTS

PretonPower Server (32-bit or 64-bit)

- Microsoft Windows Server 2008
- Microsoft Windows Server 2003 SP2 or later
- .NET Framework 2.0 or later

PretonPower Client (32-bit or 64-bit)

- Microsoft Windows 7
- Microsoft Vista SP1 or later
- Microsoft Windows XP SP2 or later
- Microsoft Windows 2000 SP4 (32 bit only)
- .NET Framework 2.0 or later