



How Does PretonSaver Compare to Toner/Ink saving Modes?

Most printers today offer the ability to save toner/ink by printing in “draft mode”, “Economode” or “toner saving mode”. Although these modes offer ink/toner savings, they are substantially different from the method used by PretonSaver.

Low Quality Printing with Low Savings

The printer’s “draft mode” may work in one of the following ways:

- Reducing printout dpi (dots-per-inch) - changing the dpi from 600 to 300. This method may result in about 5% -10% savings but will have the side effect of a light printout.
- Reducing toner density levels - the printer will change the print density from 3 to 1. This method may generate 8% to 15% savings, with a much lighter output.
- Half toning - changing the color from black to gray. This method generates marginal savings for non-color documents and will have the side effect of a low-quality light printout.

These methods **do not even try to maintain the same quality level**, yielding a print that is merely a draft. In addition, the savings level that they offer is substantially lower than that offered by PretonSaver.

PretonSaver uses several technologies that not only offer much greater savings than toner saving mode, but also yield high quality results that are virtually the same as regular printing.

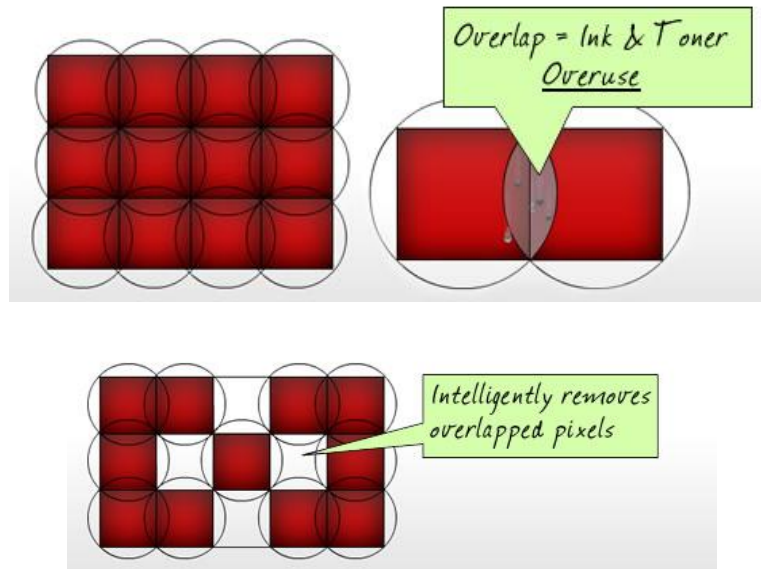
Smart Pixel Removal with Pixel Optimizer™

Unlike the printer’s draft mode, which simply reduces the density levels or printout’s dpi, PretonSaver uses a technology that employs sophisticated algorithms to selectively remove wasteful pixels. The selection of the specific pixels which will not affect the quality is what makes this technology unique and outstanding. During printing the spaces left by the removed pixels are covered by excess toner/ink from adjacent pixels, creating a printout that looks almost identical to a regular printout.

Preton Ltd.

7 Levi Yitzchak St., Tel Aviv,
Israel, 62483

www.preton.com



Identifying Elements to Further Increase the Savings

In order to maximize savings even further without degrading the quality, PretonSaver uses a technology that identifies the different elements on a page and correspondingly applies different optimization algorithms. The saving levels reached on text can go as high as 70%, while the graphics and images can benefit from 20%-30% savings. This selective approach yields high quality documents while saving up to 70% on ink or toner. The printer's draft mode does not have this capability, which means that the reduction in dpi or toner density levels is applied to the entire document regardless of the different elements it is composed of.



Photo saving level 14%

Text saving level 35%

Graphic saving level 18%

OPINION STORY

Obama: Time for health care 'games' is over

updated 20 sec ago

Latest News

- Official: 9/09/09 had significance
- CNNMoney: Nasdaq and S&P 500
- Garrison Keillor suffers minor
- Steve Jobs returns to host Apple
- Ticker: Ted Kennedy's family
- Cafferty: Your price for meat
- NCAL: Lawmaker taped boasting about sex quits
- Teacher turns "crazy idea" into new school
- Haleigh seen near sister's brother's home?
- Doctor haunted by injured kids he's saved
- Remastered Beatles are ear candy
- Report.com: Flash floods soak Turkey
- Archer Robin Meade's battle with anxiety

Mortgage Rates Are On A Roller Coaster Ride

\$90,000 Mortgage for Under \$499/Mo!

Select Your State

- Alabama
- Alaska
- Arizona
- Arkansas

Obama's Heavy Lift

COMMENTARY

Speech is high risk

Ed Rollins says Obama must answer many questions to make progress on health care reform.

Little Girl Found

OPRAH.COM

Repairing self-esteem

It didn't take constant praise or a man's attention. All it took was an old photo and her own validation.

TRAVEL COMPARE

\$8,000 cell bill?!

A vacation left one woman with a staggering, \$8,000 cell phone bill. What she did wrong and how to avoid it

PARENTING.COM

Gee whiz

Let your child explore and discover with these tests that are designed to boost science skills

THE FIRST EVER LEXUS HS HYBRID

Learn more

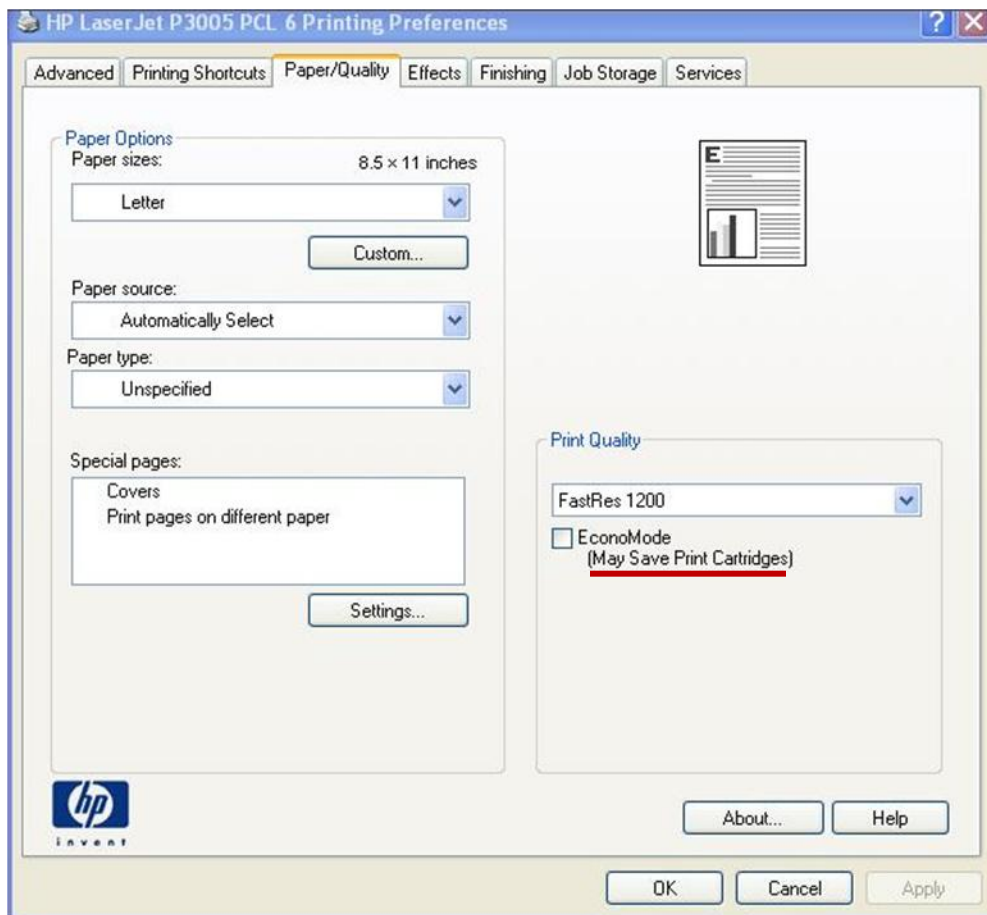
Printer Dependency

“Draft mode” is a setting that is specific to certain printers; some have it while others don’t. This means that in a large corporate environment with hundreds of printers, the ability to manage and enforce these settings across multiple printers is either time consuming or virtually impossible. PretonSaver is a software-based solution that is completely printer independent. In a corporate environment print policies are set across the entire enterprise. In addition you can easily define print rules for active printers, users, groups, and applications. Rules include page and color usage privileges and quotas, enforcement of Duplex printing where available, automatic omission of images for specific users/applications, and much more.

Preton Ltd.

7 Levi Yitzchak St., Tel Aviv,
Israel, 62483

www.preton.com



Saving on paper

PretonSaver Enterprise™ offers print rules and policies that can reduce the overall print volume by up to 20%. This additional savings is translated into a lesser paper and toner consumption. All on top of the important issue of reducing the environmental stress caused by printing.

Ease of Use

“Draft Mode” requires special printer property settings. Since the result of the “draft mode” printing is of a “draft” quality, these settings must be activated and de-activated for various printing purposes. In contrast, as a software-based solution, PretonSaver provides control as you print or alternatively can be set by your network administrator.

Preton Ltd.

7 Levi Yitzchak St., Tel Aviv,
Israel, 62483
www.preton.com